

LASERS

FOR MINING, TUNNELING & INDUSTRIAL ALIGNMENT

MOBA's mining and tunneling lasers enable accurate alignment of tunnels being constructed by tunnel boring machines, drill and blast, pipe jack or conventional hand techniques.



MINING AND TUNNELING LASERS

DESIGNED FOR HARSH OPERATING ENVIRONMENTS

MOBA lasers are waterproof and rugged thanks to all-metal construction. The lasers are based on diode technology and can be powered from internal batteries or external power supply.

MOBA also offers intrinsically safe lasers which do not require explosion proof containment when working in gaseous environments such as methane/air mixtures. The intrinsically safe lasers are waterproof, rugged and constructed of stainless steel and brass.

TAIL LASER

This calibrated laser is used in mining industry to show a reference point. A brass tail end is set with quick drying cement in a pre-drilled hole with SB.300.TAIL aimed at the required reference point. When cement is cured the laser can be removed and replaced at any time to show the reference point.



INTRINSICALLY SAFE LASERS

BATTERY POWERED, FOR WORK IN GASEOUS ENVIRONMENTS

LD.35.IS

- CERTIFICATE No. IECEx SIM 13.0004
- Classification code: Ex ia I/IIC T4 IP55 (LD.35.IS)
- Range: 200m
- Beam diameter at exit: 5mm
- Power: LD.35.IS 2xC cells
- Shown with optional gimbal bracket



LD.60.IS

- CERTIFICATE No. IECEx SIM 11.0003
- Classification code: Ex ia I/IIC T4 IP55
- Range: 500m
- Beam diameter at exit: 13mm
- Power: 4xD cells
- Shown with optional gimbal bracket



60 SERIES LASERS

LONG RANGE TUNNELLING LASERS

LD.60.B

- Available with red or green beam
- Powered via internal batteries or external power supply
- Shown with optional gimbal bracket



LD.60X25B

- The LD.60X25 give you ability to adjust the focus and therefore the size of the laser beam, making it ideal for alignment over long distances
- Available with red or green beam
- Powered via internal batteries or external power supply
- Shown with optional gimbal bracket



INDUSTRIAL ALIGNMENT LASERS

LASERMAX

LASERMAX SERIES

Whether you are in the timber, metal, textile or printing industry, you can increase your productivity by using accurate laser generated guidelines. Using Lasermax lasers can save you thousands of dollars each month by minimising waste and saving time.

The strong bright light produced by MOBA's Lasermax is ideal for use in even the harshest industrial environments. Initial set-up is quick and precise and the unit remains virtually maintenance free for years.

Lasermax is available in red beam or green beam models and in either laser line or laser dot models. The green beam offers better visibility especially when reflected off dark

surfaces. Contact MOBA for an analysis of which Lasermax best fulfills your requirements.

Externally powered and with range of up to 50m for the laser dot version, the units are housed in rugged anodised aluminium casing which is both light and strong. A range of brackets and accessories are available to suit the lasers.



**ML.LD LASERMAX
SHOWN WITH BRACKET**



ML.LD DOT LASER

FENCE ALIGNMENT

ENABLE EFFICIENT AND PRECISE ALIGNMENT

Stay in-line from the first post to the last! The only laser of its kind delivering fencing contractors an easy to set up alignment tool.

MOBA's FP750 harnesses the accuracy and efficiency of laser technology to enable efficient and precise alignment between two reference points. Using a MOBA Laserguide laser receiver further simplifies the process by enabling the user to achieve automatic or manual machinery control.



FP750
MAX. RANGE 750M RADIUS

HOW IT WORKS

The FP750 Alignment Laser works by setting the unit up on the first or last position. Line up the direction you would like to go with the scope on top of the laser. Once you have lined this up you simply work towards or away from the laser beam. The laser is picked up by using either a handheld receiver or Laserguide machine mounted receiver.



ACCESSORIES

PENTA PRISMS

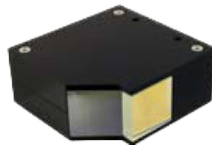
Penta prisms allow complex set-ups by reflecting the laser beam through a set angle without the need to accurately align the beam with the prism.



A.MCE.162 - 110°



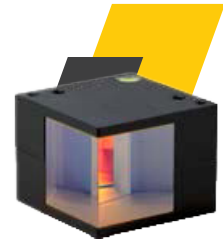
A.MCE.167 - 138°



A.MCE.168 - 135°



A.MCE.191 - 70°



A.MCE.029 - 90°

RUBBER BUMPER & GIMBAL BRACKETS

Gimbal brackets allow for quick and easy mounting of the laser and accurate alignment of the laser beam in 2 axes thanks to fine adjustment knobs.

- A.60.004.IS - for 60 series intrinsically safe
- A.35.004.IS - for 35 series intrinsically safe



EXTERNAL POWER KIT

The dummy battery and the cap with input connector allow use of 60 series lasers with an external power source.

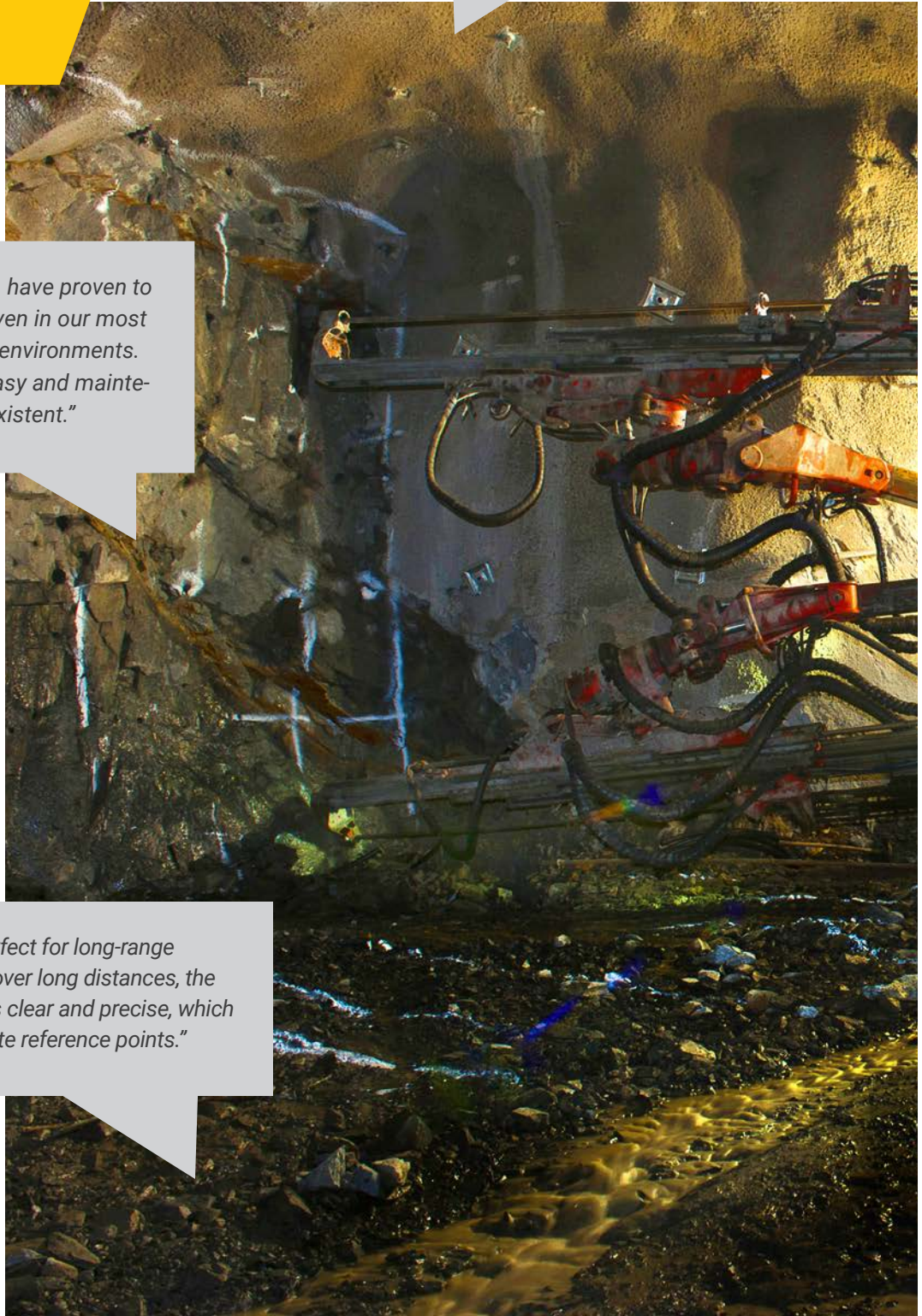
- Dummy battery A.MCE.067
- Cap with input connector A.MCE.066
- Cord A.RS.001



"MOBA lasers offer impressive precision and visibility, even on bright surfaces. The robustness of the housings and the water resistance make them ideal for our industrial requirements."

"The lasers from MOBA have proven to be incredibly reliable, even in our most demanding production environments. Installation has been easy and maintenance is virtually non-existent."

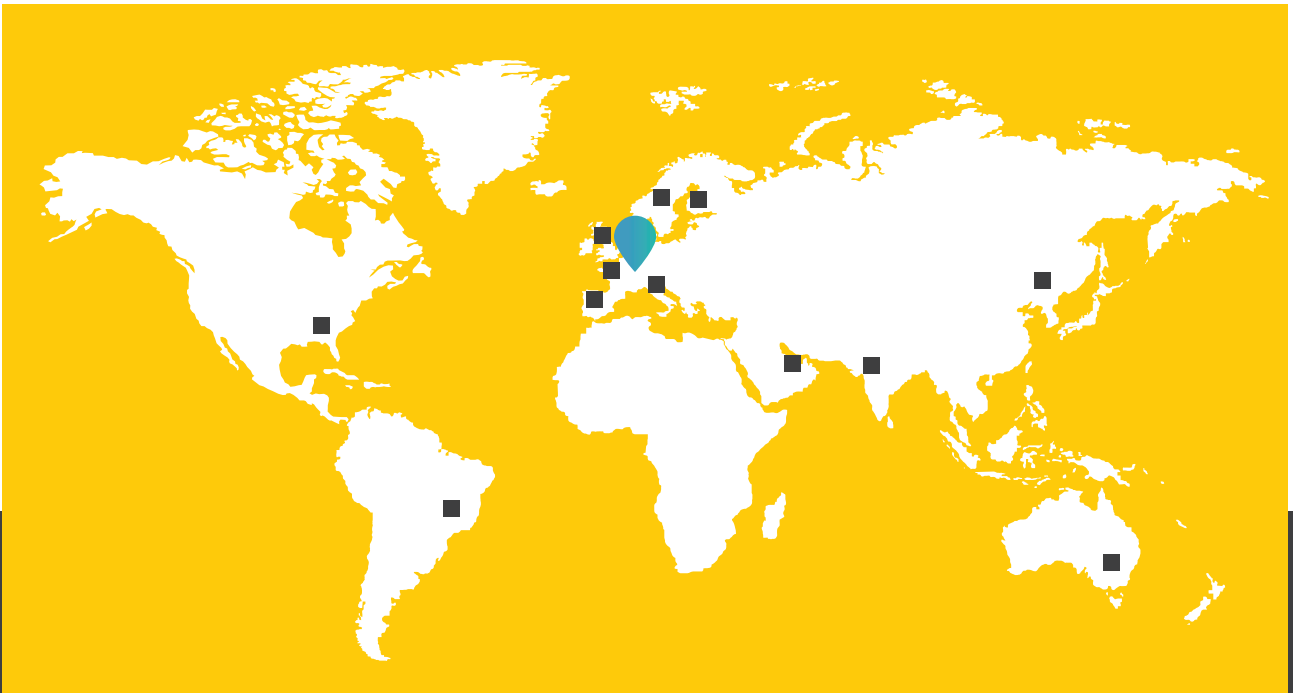
"The tail laser is perfect for long-range applications. Even over long distances, the laser beam remains clear and precise, which helps us set accurate reference points."



MOBA GROUP

The MOBA Group has been a major player in mobile automation for more than 50 years. Our know-how and experience make us a globally recognized expert. We develop and produce innovative machine control systems, identification and mobile weighing technologies, as well as flexible software solutions. MOBA components and systems are also used in areas where robust and reliable sensors, controllers and control units are needed.

First Choice In Mobile Automation – our vision since 1972



CONTACT



MOBA Mobile Automation AG
Kapellenstraße 15
65555 Limburg | Germany
moba-automation.de